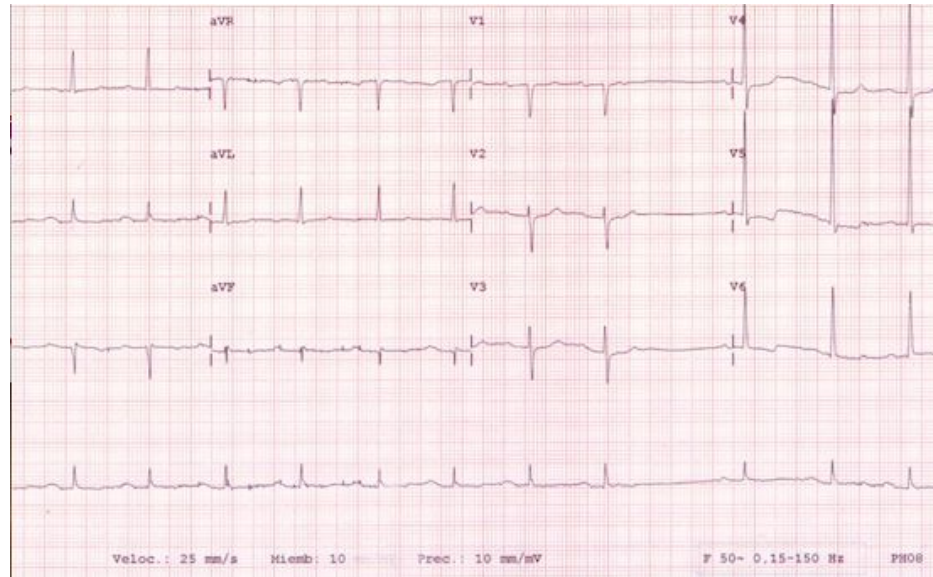


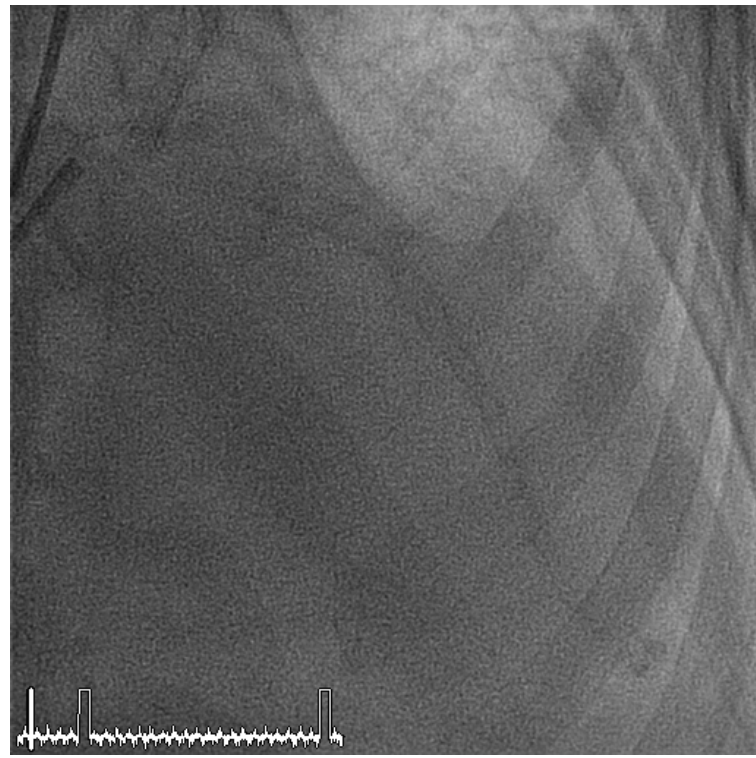
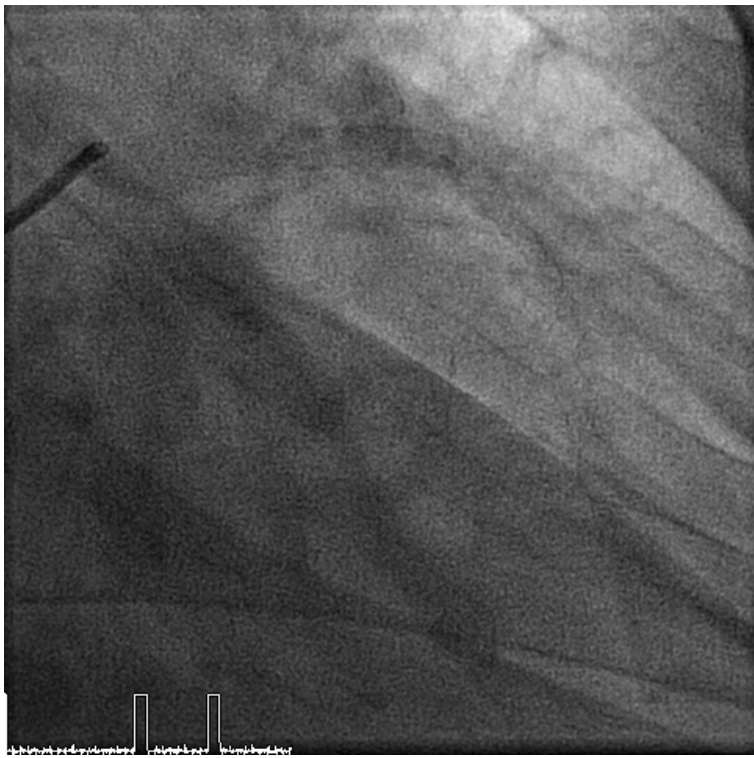
2019 | euro
PCR

SHOCKWAVE: useful but potentially dangerous

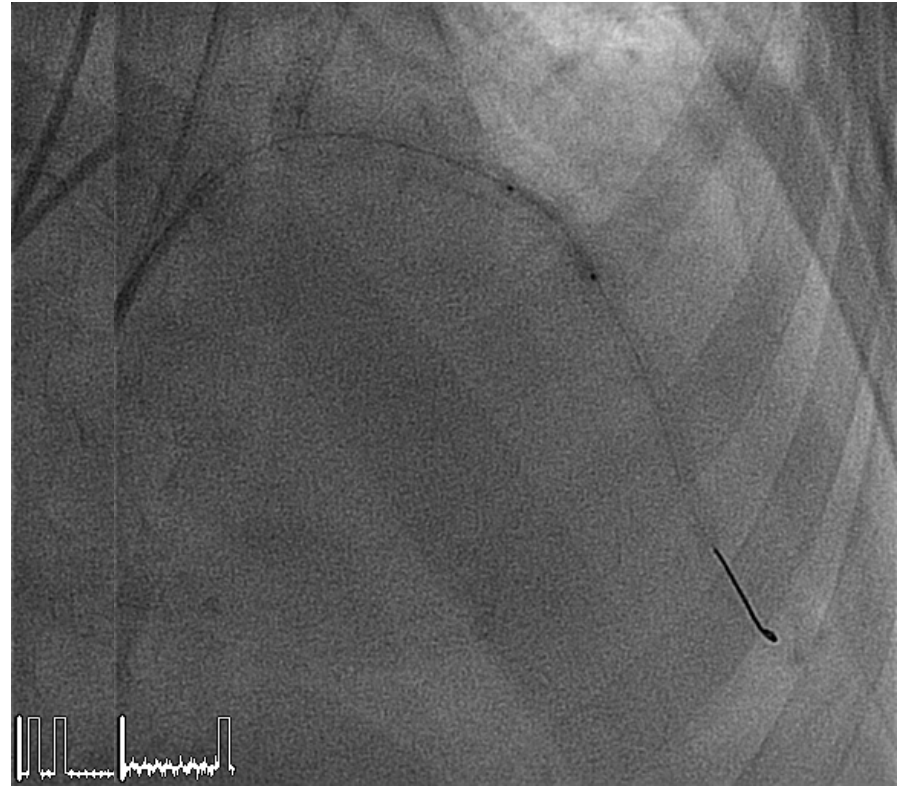
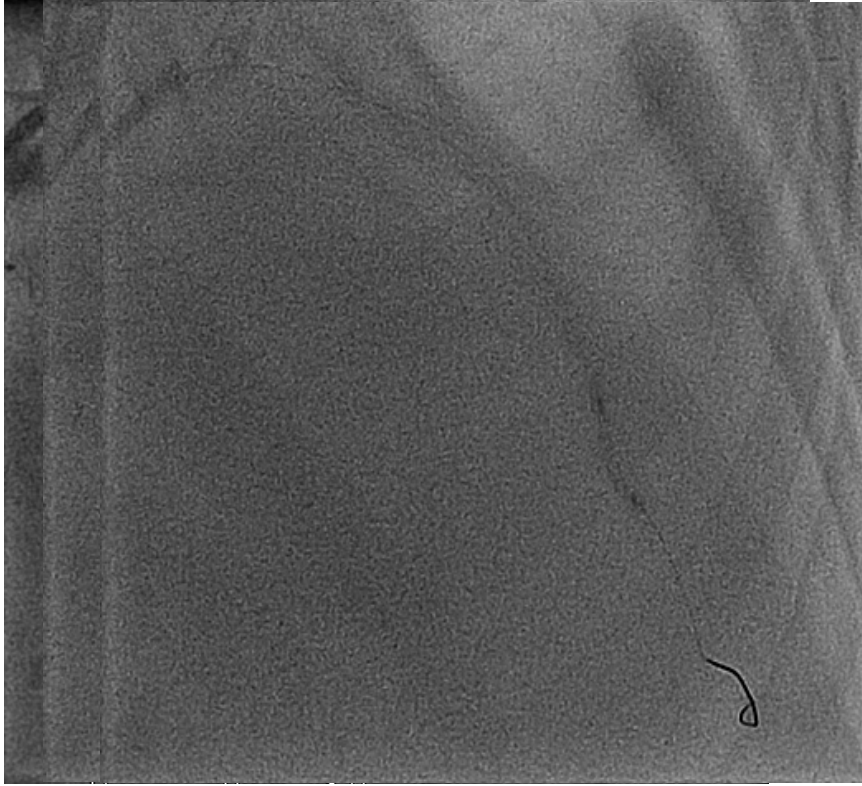
López Lluva MT, Jurado Román A, Sánchez Pérez I, Abellán Huerta J,
Lozano Ruiz-Poveda F.
University General Hospital of Ciudad Real
Ciudad Real, Spain

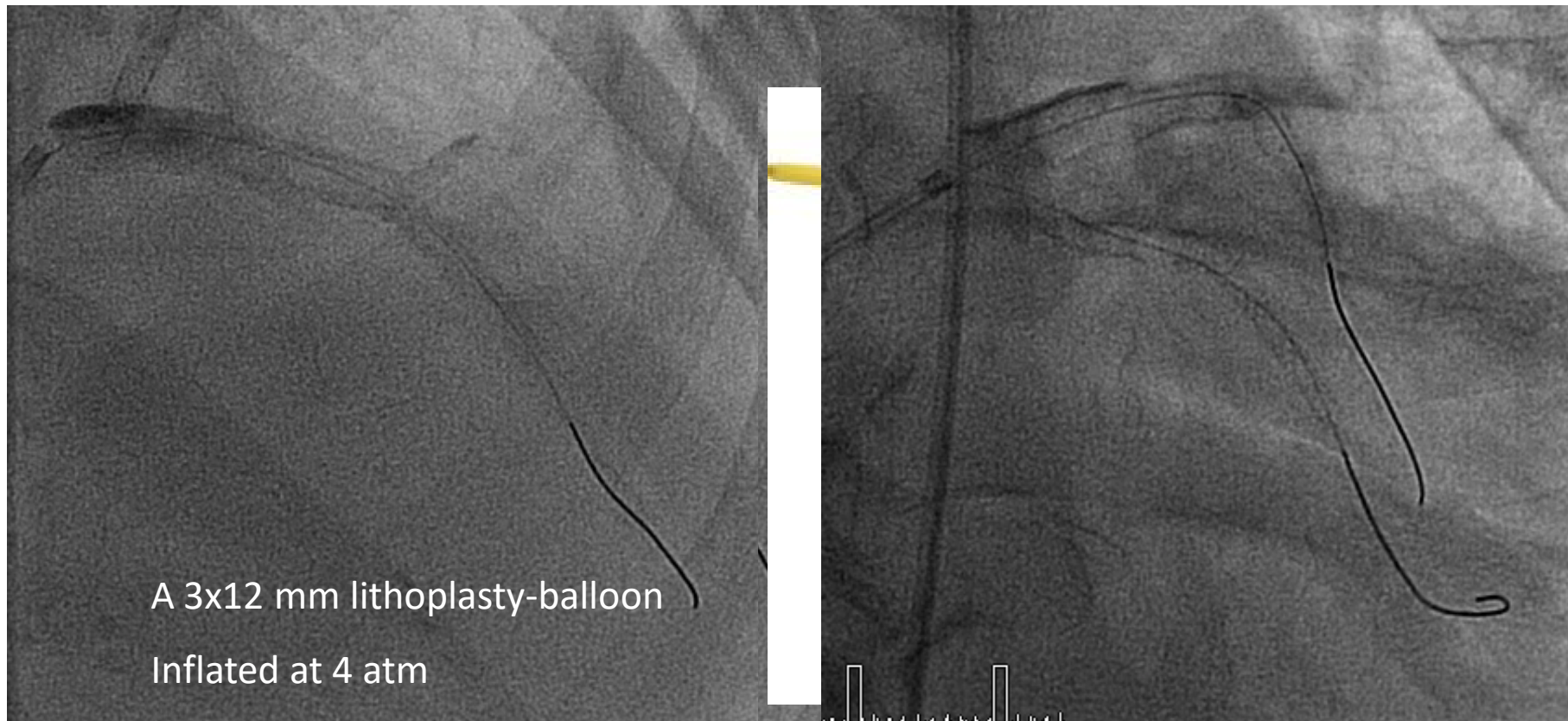
- 73 yo Female with new onset chest pain
- RF: hypertension, hyperlipidemia & diabetes. Sedentary life style

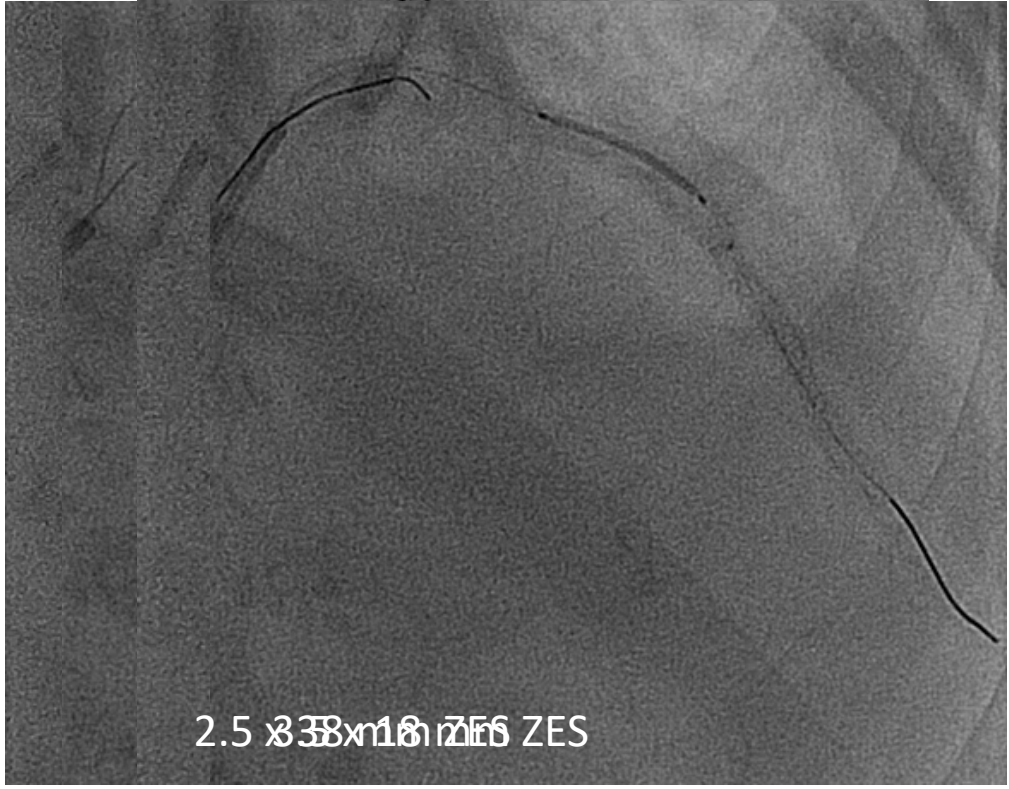
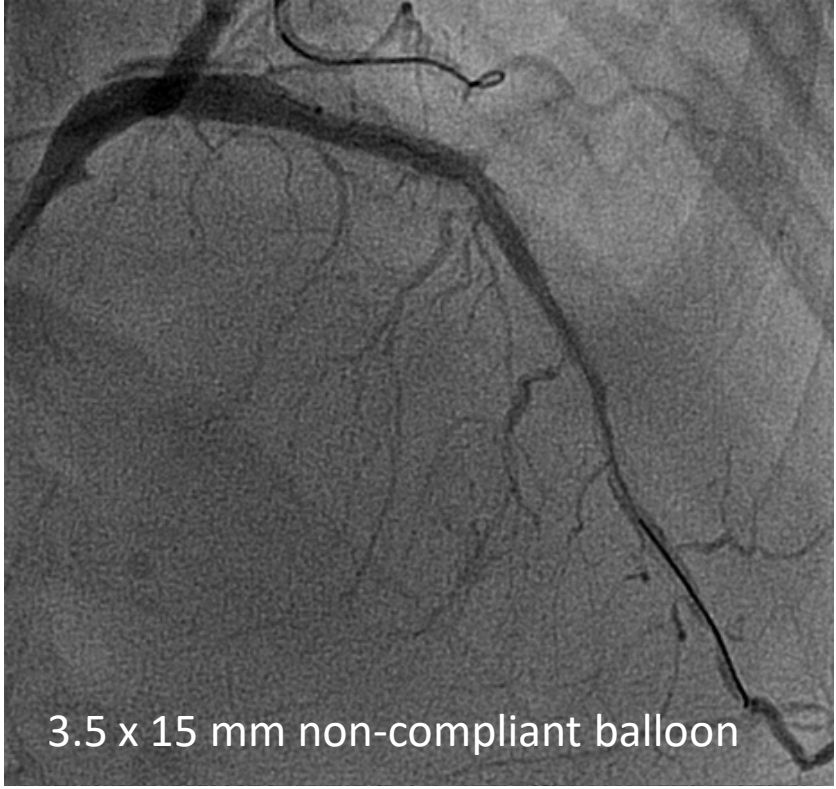


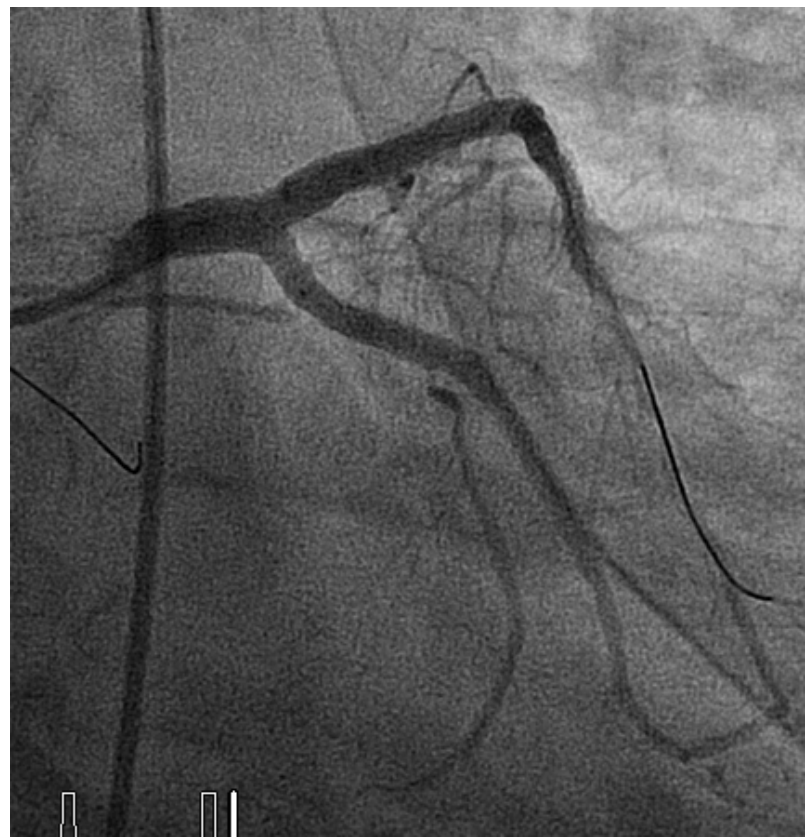












- Complex and severely calcified coronary lesions (CCL) are now commonly treated with PCI.
- **PCI of CCL** continues to be **challenging**, with high rates of failure, complications and adverse outcomes.
- **Intravascular lithotripsy (IVL)** is a very useful device. It induces circumferential calcium modification by creating calcium fractures

- Nevertheless, we have to be aware of possible complications while treating CCL, such as balloon rupture.
- If a balloon explodes during lithoplasty it can generate a non-controlled dissection or even a vessel rupture.
- In the absence of more resistant balloons, interventional cardiologists have to be prepared for this lithoplasty-related complication.